



INTERNATIONAL
FEDERATION
for
SPINA BIFIDA
and
HYDROCEPHALUS

MEASURING BLADDER PRESSURE

Training manual for nurses

© International Federation for Spina Bifida and Hydrocephalus

Last revision: August 2012

1) Purpose of measuring bladder pressure

- Evaluate the effect of the Oxybutynin treatment
- Check if the full bladder has a safe pressure = below 30cm H₂O water

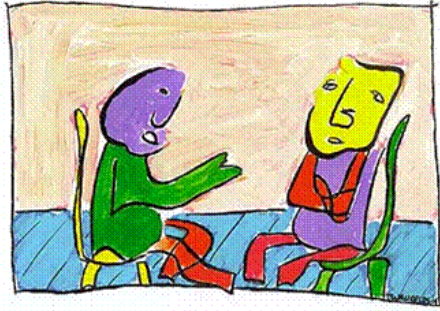
NOTE: in case of a bladder infection, bladder measurement is not useful because the bladder muscle reacts to the infection

2) Two Simple techniques

1. Fill bladder with normal saline solution to a maximum of 5 to 10ml/min



2. Measure with feeding tube after natural filling



- Give a clear explanation to mother and child
- Put the child in a comfortable lying position

Technique 1: Filling of bladder with normal saline solution of 0,9%

Necessary materials:

- Normal saline solution
- Three-way tap
- Infuse set
- Catheter
- Measuring tube (water manometer)
- Collecting bowl
- Disinfectant
- Compress



Technique:

- Collect the necessary materials
- Place the catheter in the bladder, empty the bladder and record the catheterized volume
- Connect the three-way tap to the catheter
- Connect the measuring tube and the infuse to the tap



- Hold the tubes at the level of the urethra = same height as bladder entrance
- Close the three-way crane at measuring tube
- Let normal saline slowly run at a maximum of 5-10ml /min
- If there is urine loss outside the catheter: stop the saline infusion and open the three-way tap at measuring tube
- The numbers on the measuring tube indicate the bladder pressure
- Catheterize the bladder of the patient after examination and record the quantity

Technique 2: Measuring natural bladder filling with feeding tube

Necessary materials:

- Catheter CH 8
- Collection bowl
- Measuring tape

Technique:

- Place and secure the catheter
- Close off the catheter and secure on the belly
- If there is leaking along the catheter, keep the catheter upright and open at the top
- Place measuring tape on pubic bone (= +/- height bladder entrance)
- Hold the catheter alongside the measuring tape
- Read the bladder pressure
- Catheterize bladder and measure quantity
- After catheterization of the bladder, the basic pressure can be measured

